



LAHSA

Homeless Strategy Committee

Interim Housing Recompression

Emily Andrade, Director of Interim Housing

August 4, 2022

Agenda

01

Current City Shelter Status

02

Recommendation for
Recompression Planning

03

Next Steps

04

Questions & Discussion

Current City Shelter Status

Current City Bed Status

(All City shelter programs and All populations)

*All data from July 28, 2022

| | Number of Beds* | Percentage |
|--|-----------------------------|------------|
| Total Contracted Beds across all City-funded programs | 6059 | 100% |
| Current Inventory (excludes beds offline due to decompression) | 4824 | 80% |
| Inventory at programs recompressed or in process of recompression | 3669 out of 4039 contracted | 91% |
| Inventory at programs that have not yet started recompression | 1155 out of 2020 contracted | 57% |

| | Number of Sites |
|--|----------------------|
| Total number of sites in quarantine status | 21 out of 101 |
| Total number of sites with entry limitations due to quarantine status | 13 out of 101 |

*In addition to beds reflected in table, 100% of family ABH contracted units (100 units) are active/current inventory

Data Sources: Internal Contract Allocations Document; Internal Matching Log; Internal Recompression Tracking Document

| Program | # | % |
|--|-----|------|
| Project HomeKey | | |
| # of sites | 14 | - |
| # of sites recompressed or in recompression process | 14 | 100% |
| # of contracted beds | 900 | - |
| Current # of beds (excludes beds offline due to recompression) | 900 | 100% |
| Safe Parking | | |
| # of sites | 16 | - |
| # of sites recompressed or in recompression process | 16 | 100% |
| # of contracted beds | 374 | - |
| Current # of beds (excludes beds offline due to recompression) | 374 | 100% |
| Safe Sleep Villages | | |
| # of sites | 1 | - |
| # of sites recompressed or in recompression process | 1 | 100% |
| # of contracted beds | 96 | - |
| Current # of beds (excludes beds offline due to recompression) | 96 | 100% |

| Program | # | % |
|--|------|------|
| Roadmap-Interim Housing | | |
| # of sites | 15 | - |
| # of sites recompressed or in recompression process | 14 | 93% |
| # of contracted beds | 999 | - |
| Current # of beds (excludes beds offline due to recompression) | 928 | 93% |
| A Bridge Home – Adult and TAY Programs | | |
| # of sites | 22 | - |
| # of sites recompressed or in recompression process | 14 | 64% |
| # of contracted beds | 1647 | - |
| Current # of beds (excludes beds offline due to recompression) | 1306 | 79% |
| A Bridge Home – Family Programs | | |
| # of sites | 5 | - |
| # of sites recompressed or in recompression process | 5 | 100% |
| # of contracted units (each unit contains multiple beds to serve families) | 100 | - |
| Current # of units (excludes units offline due to recompression) | 100 | 100% |

| Program | # | % |
|---|------|-----|
| Transitional Housing (Adults and TAY Populations) | | |
| # of sites | 3 | - |
| # of sites recompressed or in recompression process | 1 | 33% |
| # of contracted beds | 45 | - |
| Current # of beds (excludes beds offline due to recompression) | 32 | 71% |
| Crisis/Bridge Housing (all Populations) and Enhanced Bridge Housing for Older Adults | | |
| # of sites | 16 | - |
| # of sites recompressed or in recompression process | 7 | 44% |
| # of contracted beds/units | 704 | - |
| Current # of beds/units (excludes beds offline due to recompression) | 435 | 62% |
| Tiny Home Villages | | |
| # of sites | 10 | - |
| # of sites recompressed or in recompression process | 4 | 40% |
| # of contracted beds | 1254 | - |
| Current # of beds (excludes beds offline due to recompression) | 716 | 57% |

LAHSA's Recommendation for Recompression Planning

This list includes what LAHSA will continue to evaluate through recompression efforts

| Effort | Description |
|-----------------------------|---|
| Covid-19 Mitigation Efforts | Review of health screenings, PPE, how to respond to testing positive, isolation protocols |
| Staff Coverage | As programs increase capacity, staffing must maintain according to requirements per program |
| Communication | Participants must be given proper notification to recompression efforts |
| Habitability | Facility must be able to accommodate the increased number of participants |
| Safety | Safety & security measures should be reviewed as programs increase participation |
| Intake Process | Continue to manage low barrier & trauma informed intake process considering COVID-19 |
| Reasonable Accommodation | Must continue to follow Americans with Disabilities Act for participants that may require own room accommodations |
| Capacity | Appropriate timelines for increases need to be identified prior to initiation of recompression |

Providers submit plans with policies & procedure to guide recompression; plans address the factors above.

Planning within Los Angeles

Overview of LAHSA's Recommended Process:

1. Assess spacing at sites that have not yet recompressed/submitted recompression plans to identify maximum occupancy in compliance with public health bed distancing requirements
2. Based on maximum occupancy determined above, increase bed capacity at sites not yet in recompression phase a rate of 5-10% every 2 weeks (assuming all criteria for recompression can be met by provider)
3. Assess impacts of COVID surges and quarantines on recompression and make adjustments to timelines as needed



Planning within Los Angeles

City Shelter Sites without Active Recompression Plans

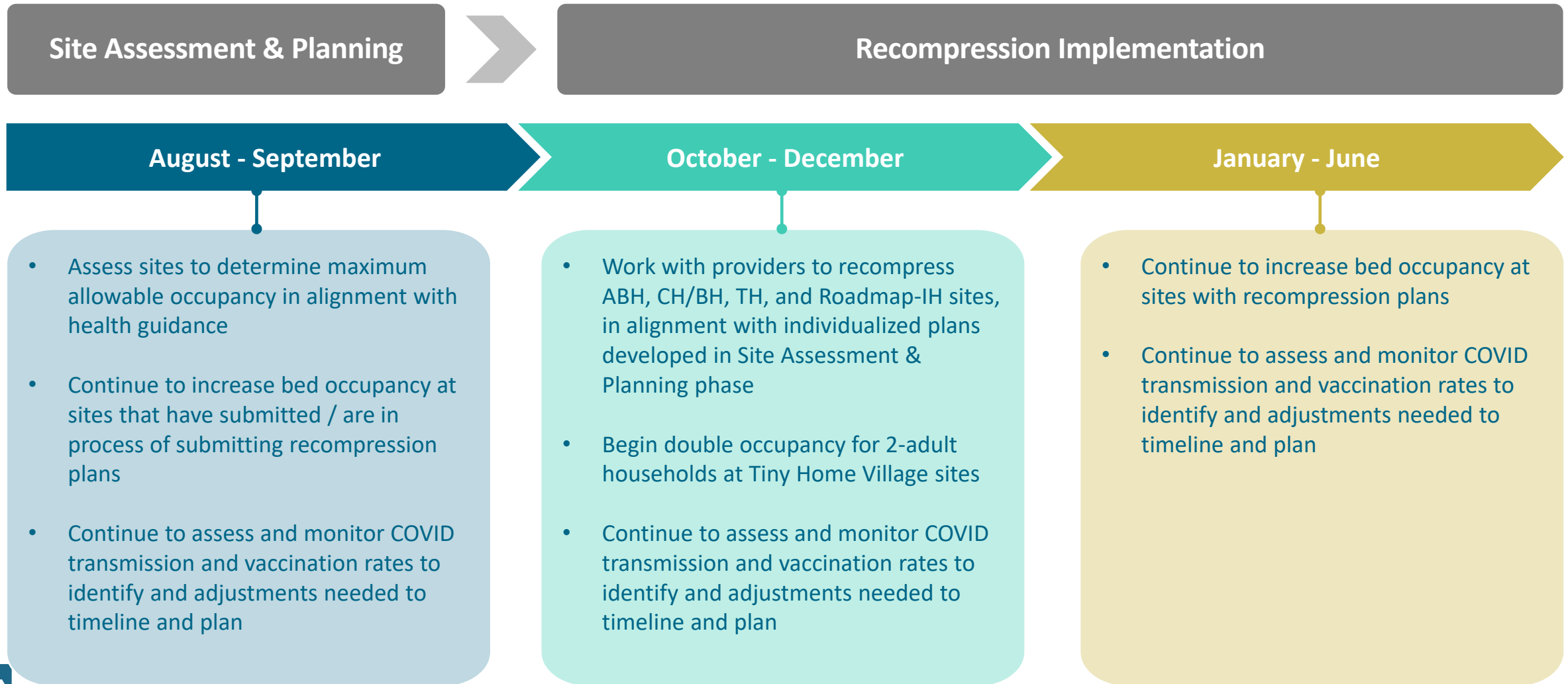
| Program Type | # of Sites | Current # of Beds/Units | Contracted # of Beds/Units | % of Current out of Contracted |
|----------------------------------|------------|-------------------------|----------------------------|--------------------------------|
| Transitional Housing | 3 | 19 | 28 | 68% |
| A Bridge Home | 8 | 316 | 472 | 67% |
| Crisis/Bridge Housing | 8 | 350 | 602 | 58% |
| Enhanced Bridge for Older Adults | 1 | 14 | 25 | 56% |
| Tiny Home Villages | 7 | 458 | 829 | 55% |
| Roadmap-IH | 1 | 73 | 144 | 51% |

Planning within Los Angeles

Tiny Home Villages: Special Considerations

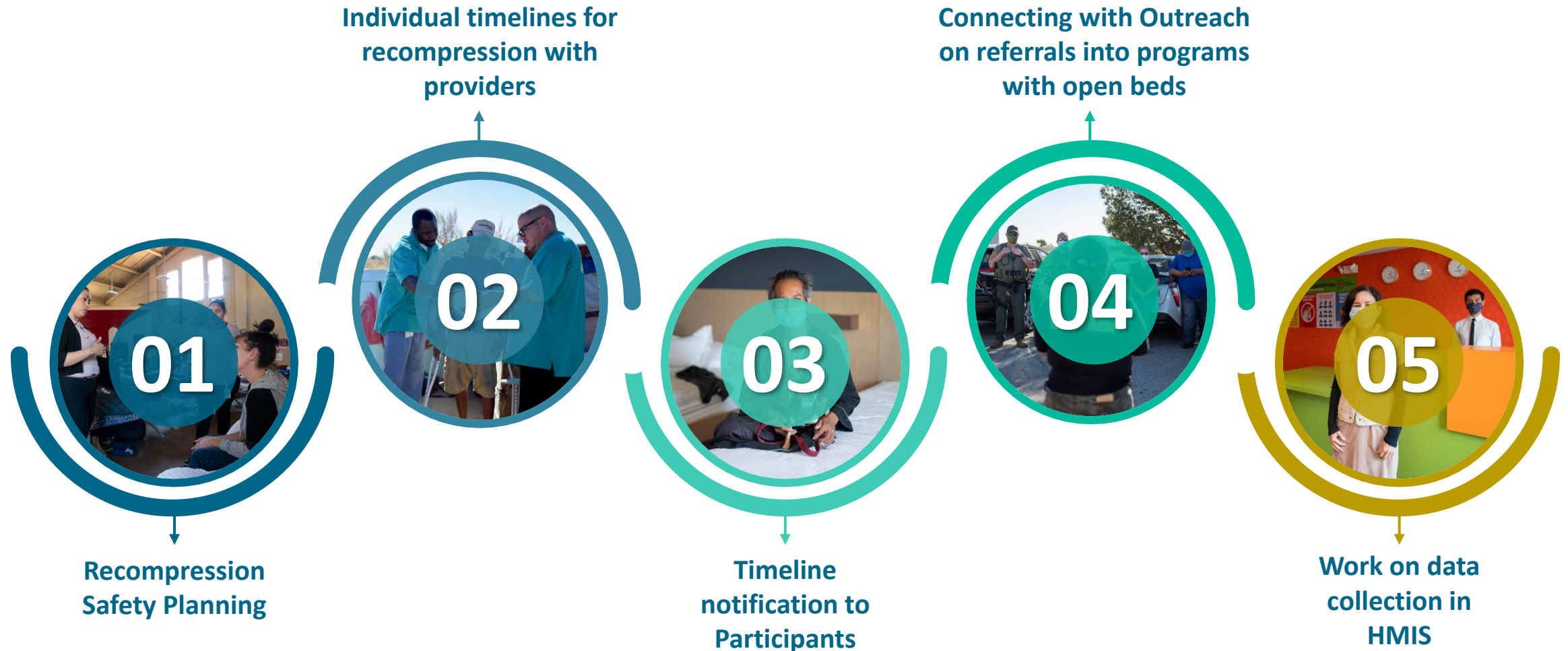
- Assessment of Unit Size and Bed Spacing: DPH guidance recommends that beds be placed 6 feet apart when possible: when that is not possible, beds should be spaced at least 3 feet apart with a head-to-toe arrangement
- COVID Prevention: Joint LAHSA, DMH, DHS, and DPH Memo in April 2022, LAHSA recommended that THV recompression be limited to two-adult households (e.g., couples, adult family members) due to the size of the units
- Programmatic Considerations: Project Roomkey and Project Homekey have demonstrated the value of non-congregate interim housing, with options for double occupancy when participants elect to share
- LAHSA recommends that any recompression efforts at Tiny Home Villages during pandemic are informed by unit size/bed spacing and phased gradually, beginning with voluntary double occupancy for two-adult households

Planning within Los Angeles



Next Steps

LAHSA will complete the following:



Questions & Discussion
