



**LAHSA**

Homeless Strategy Committee

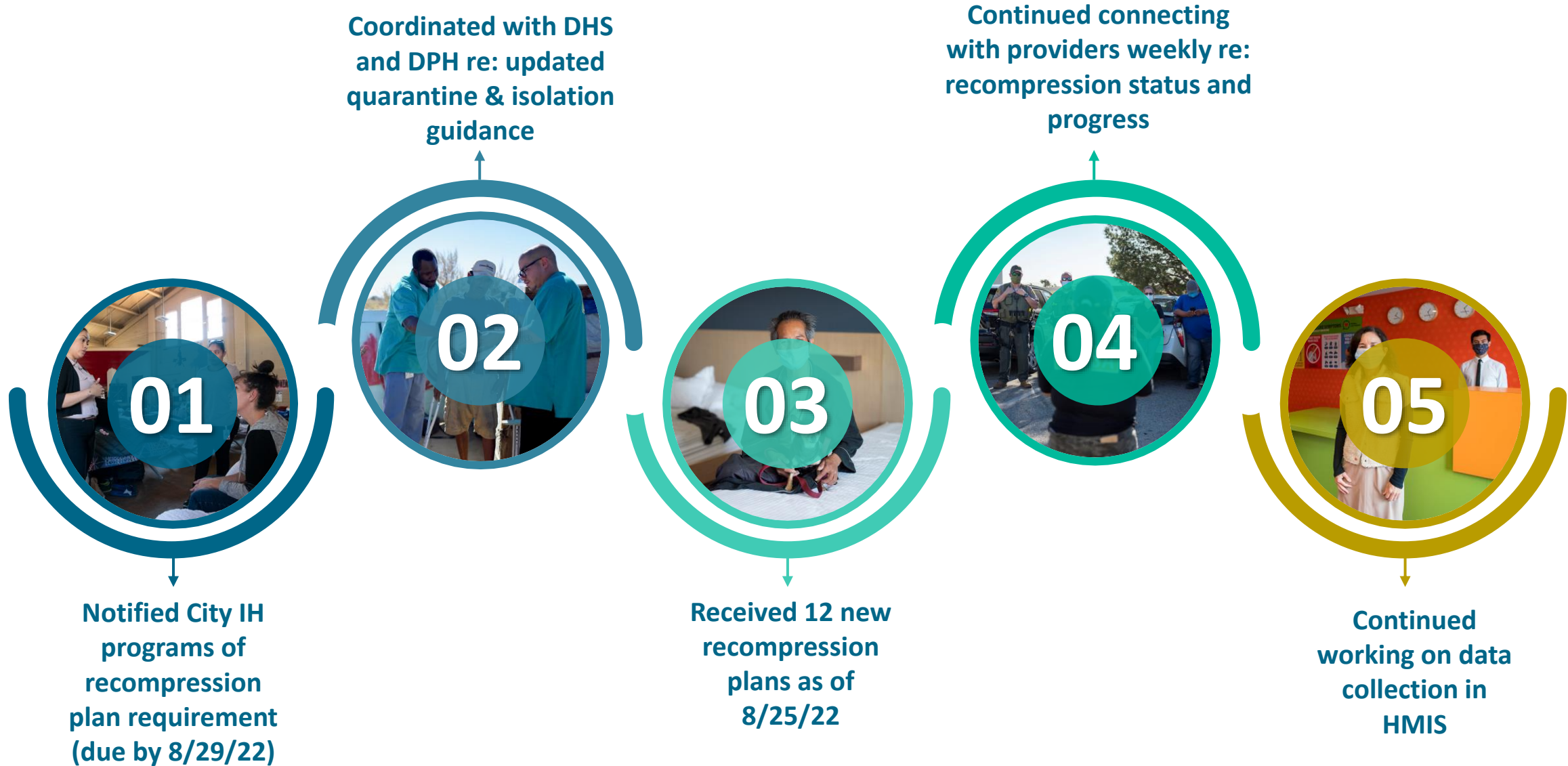
# City Interim Housing Recompression Report

Emily Andrade, Director, Interim Housing

---

September 1, 2022

# Since the last report, LAHSA:

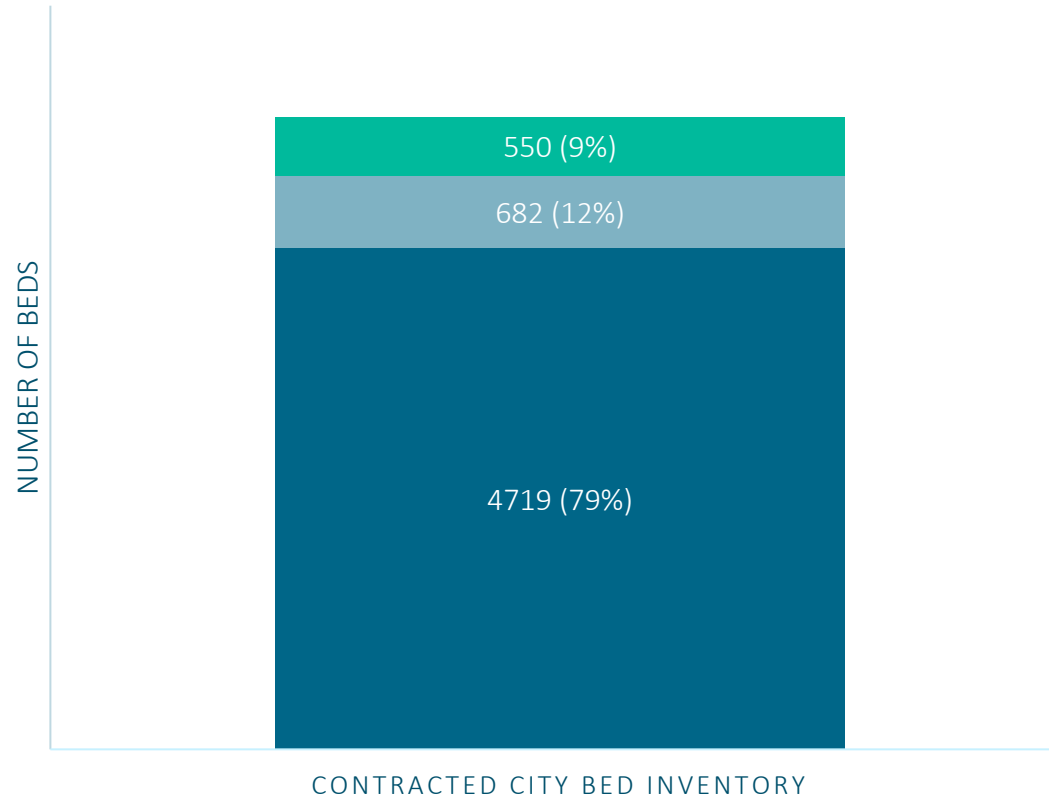


# Current Status

---

## Current City Bed Status (All Programs\*) – Data As Of 8/25/22

■ Active Bed Inventory   ■ Beds in Process of Recompression   ■ Beds Offline (Not Yet in Recompression Process)



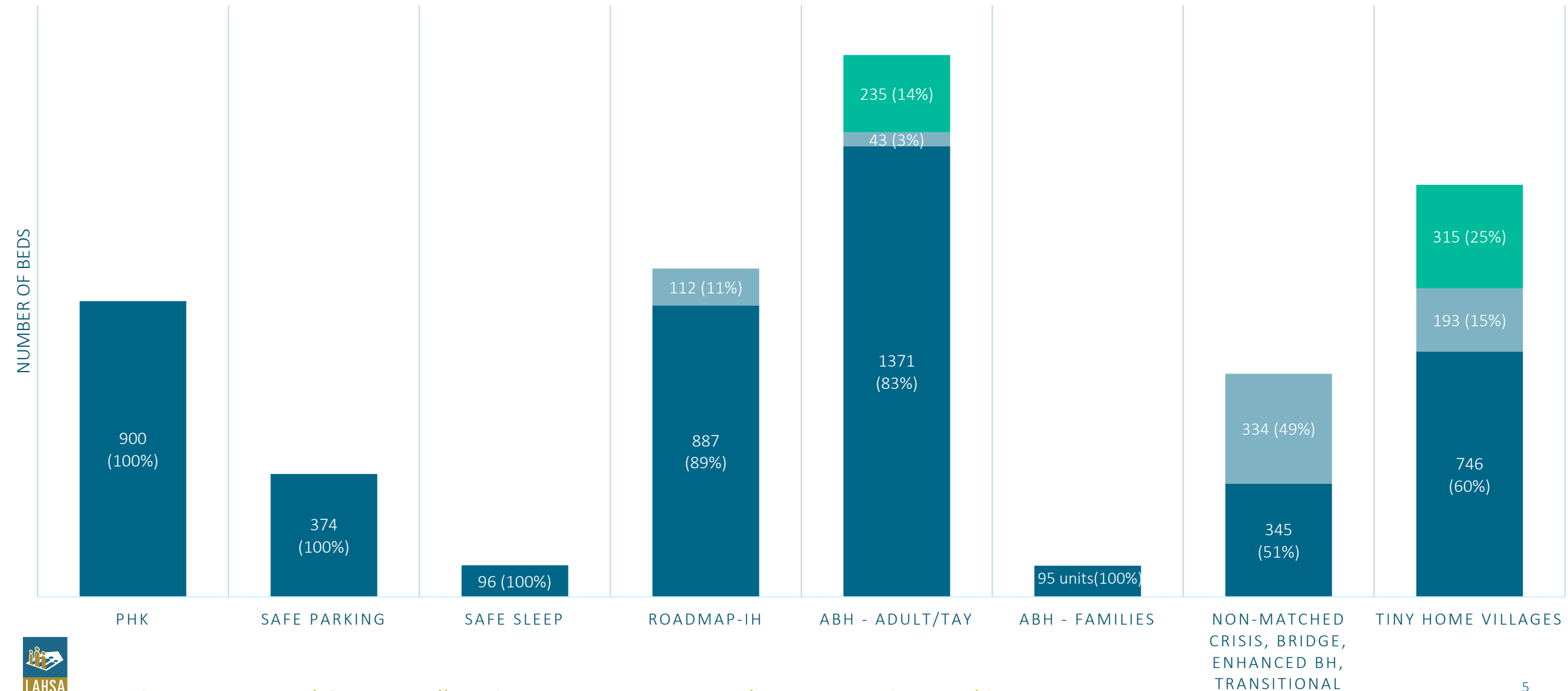
**Quarantine Status:** 18 sites are on quarantine effective 8/25/22, of which 3 are in Phase 1 (unable to accept intakes)

\*In addition to beds reflected in table, 100% of family ABH contracted units are active/current inventory

Data Sources: Internal Contract Allocations Document; Internal Recompression Tracking Document 4

# Current City Bed Status By Program Component – Data As Of 8/25/22

■ Active Bed Inventory ■ Beds in Process of Recompression ■ Beds Offline (Not Yet in Recompression Process)



## Current Vacancies Available for Referrals

Effective 8/25/2022

Program Component Type	Total Active City-Funded Beds	Beds Available for Referrals*
A Bridge Home – Adults & TAY	1647	190
Roadmap – Interim Housing	999	35
Project Homekey	900	40
Tiny Home Villages	1254	118
Crisis, Bridge, Transitional (not matched)	749	Varies by day

*\*Reflects beds at point in time on 8/25/22 that are active/online, that are not on Phase 1 quarantine, and for which there is not already a pending referral*

# Factors Impacting Full Recompression

---



## Factors Impacting Full Recompression

Provider concerns around full recompression include:

- Prior experiences with quarantine and hesitancy to increase risk of additional quarantine incidents
- Inadequate facility and/or system capacity to support isolation for COVID+ participants
- Challenges with having adequate staffing to rapidly increase occupancy at 3 sites (as of 8/25/22)

Additional factors impacting full recompression include:

- Provider and Council District preference to operate THVs at single occupancy to improve participant experience and promote stronger outcomes
- Site-specific factors such as Pilot initiatives based on single occupancy program model